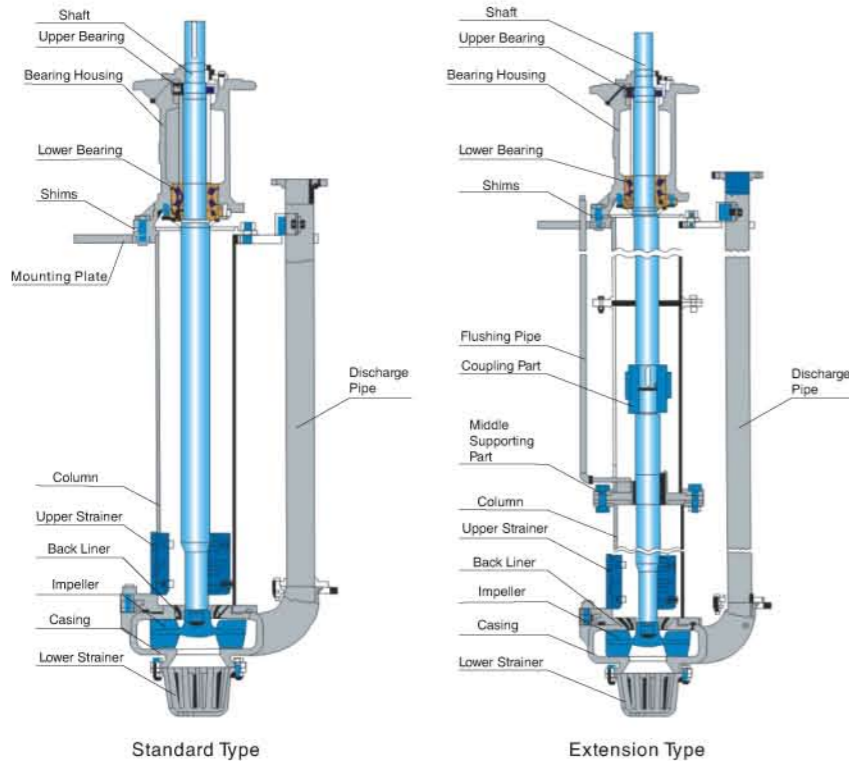
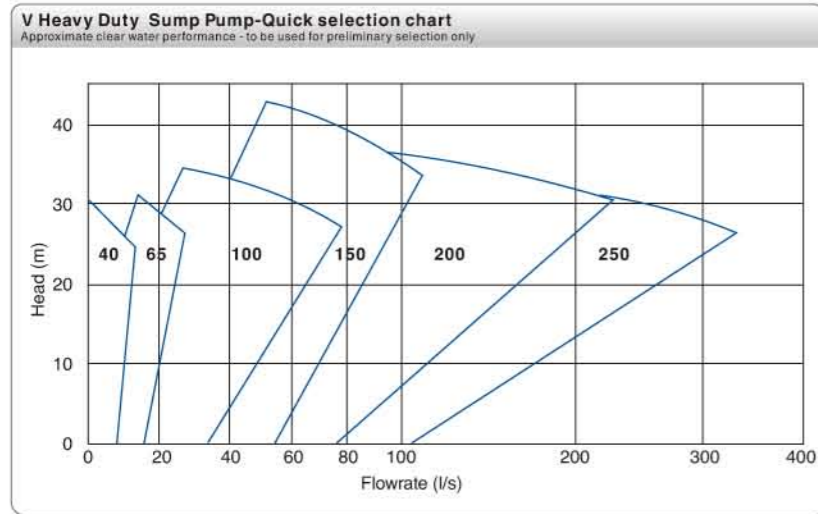
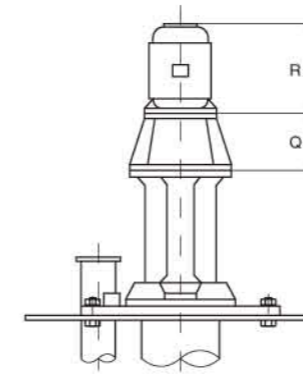


The V Series pump is ideal for a variety of submerged suction pumping applications. These pumps operate well in a variety of sump conditions, and can also be readily applied on floating dewatering or other floating pump platforms. As a true cantilevered pump, the SS Series does not have submerged bearings or seals; thus, eliminating the primary failure mechanism for similarly fielded pump lines.

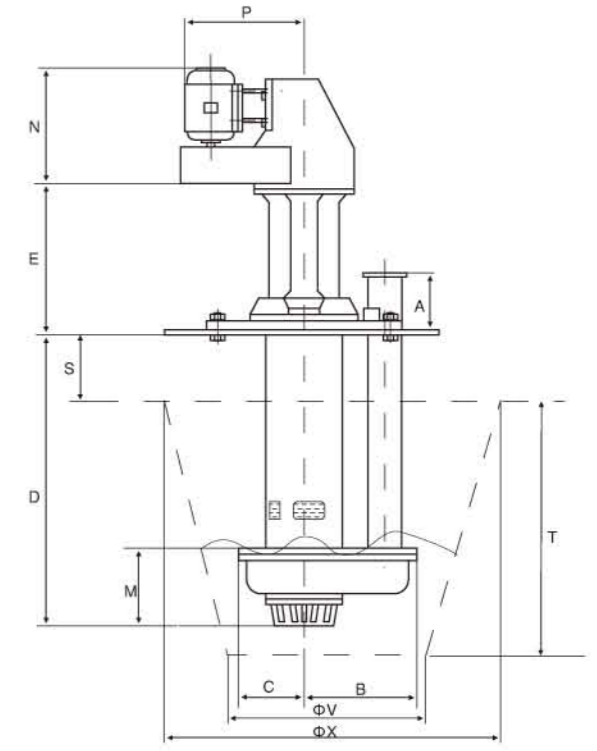
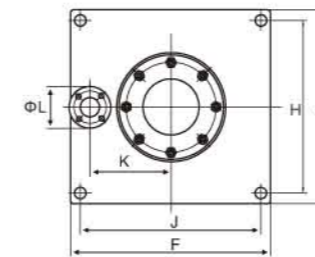
Size range (discharge) 1.5" to 10" (40mm to 250mm)	Capacities to 5,060gpm (1,150m <sup>3</sup> /h)	Heads to 120ft (37m)
---	--	-------------------------



- ★ **CASING** - The metal pumps have a heavy walled abrasive resistant chrome alloy casing. Rubber pumps have a molded rubber casing adhered to sturdy metal structures.
- ★ **BEARING ASSEMBLY** - Our maintenance friendly bearing assembly has heavy duty roller bearings, robust bearing housings, and a massive shaft.
- ★ **STANDARD IMPELLERS** - open impellers; fluid flow enters the top as well as the bottom. This design eliminates shaft seals and reduces thrust load on the bearings.
- ★ **LARGE PARTICLE** - Large particle impellers are also available and enable passing unusually large solids.



Direct Coupled Drive



Belt Drive

Model	Size mm	A	B	C	D	E	F	G	H	J	K	ØL	M	N	P	Q	R	Wt kg	S	T	ØV	ØX
40V-PV	40	137	285	153	900 1200	380	500	500	450	450	205	127	174	733	675	248	629	285	280	695	550	1000
40V-PV(R)	40	140	265	175	900 1200	380	500	500	450	450	205	127	174	733	675	248	629	249	280	695	550	1000
65V-QV	65	227	399	231	900 1200 1500	492	680	680	620	620	285	178	265	898	794	290	681	432	350	925	800	1400
65V-QV(R)	65	230	380	260	900 1200 1500	498	680	680	620	620	285	178	265	898	794	290	681	386	350	925	800	1400
100V-RV	100	260	538	317	1200 1500 1800	662	1000	870	800	930	400	229	393	1141	1020	416	960	867	350	1225	1000	1750
100V-RV(R)	100	266	535	332	1200 1500 1800	668	1000	870	800	930	400	229	393	1141	1020	416	960	771	350	1225	1000	1750
150V-SV	150	390	670	365	1500 1800 2100	875	1100	1100	1030	1030	500	280	475	1311	1200	476	1011	1737	350	1525	1250	2150
150V-SV(R)	150	395	670	400	1500 1800 2100	883	1100	1100	1030	1030	500	280	475	1311	1200	476	1011	1520	350	1525	1250	2150
200V-SV	200	450	805	440	1500 1800 2100	878	1300	1200	1100	1200	600	343	550	1313	1300	476	1011	2800	350	1525	1500	2400
250V-TV	250	500	930	470	1800 2100 2400	1000	1750	1450	1350	1650	700	406	685	1572	1750	561	1246	3700	400	1775	1700	2700

Note: All values are in millimeters (mm) except where noted

- ★ Continuous or "Snore" Sump Pump Operation
- ★ Abrasive Slurries
- ★ High Density Slurries
- ★ Large Particle Slurries
- ★ Sump Drainage
- ★ Washdown
- ★ Floor Drainage
- ★ Mixing

